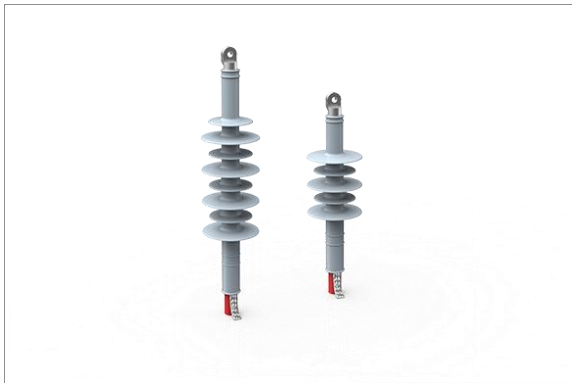


RCST COLD SHRINK TERMINATIONS



Shrink terminations for polymeric insulated medium voltage cables UO/U (Um) 6/10 (12) - 12/20 (24) kV

The REPL terminations RCSIT are designed as indoor and the RCSOT as outdoor terminations in monobloc design. The silicone outer tube with integrated stress control cone provides excellent protection and allows easy and safe installation.

Features:

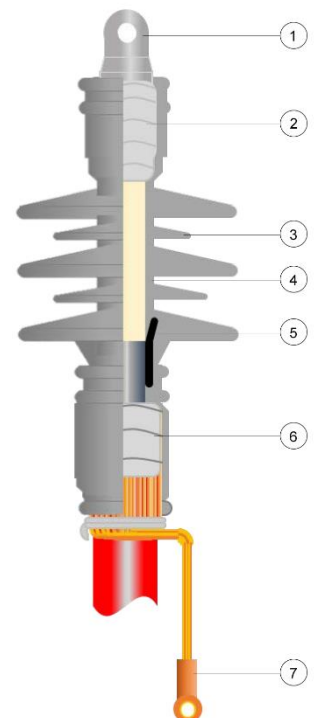
- indoor (RCSIT) and outdoor (RCSOT) version available
- tested and certified in accordance with Cenelec HD629.1-S2
- suitable for cross-sections up to 630mm² with common polymeric insulated single-core cables up to 24kV
- incl. screw cable lug, available alternatively without cable lug
- use of compression lugs possible
- design enables safe and quick installation
- kits incl. all the small and individual parts required
- clear installation instructions

Schematic representation of outdoor termination RCSOT 20kV

- 1 Cable lug
- 2 Mastic tape
- 3 Creepage extension shed
- 4 Silicon outer tube
- 5 stress control cone
- 6 Mastic tape
- 7 Screw cable lug for screen wires

The RCST terminations in monobloc design consist of a single silicone outer tube with integrated stress control. As supplied, the terminations are expanded on a support spiral and are easy to mount on the specified cable cross-sections and cable lugs. Installation involves simply pulling out the spiral as soon as the termination is in its correct end position.

The sheds are already integrated in the termination body. It is not possible to use additional sheds.



RCST COLD SHRINK TERMINATIONS

Terminations RCSIT.ML series for indoor and RCSOT.ML for outdoor applications (incl. screw cable lug¹):

Item-No.	Item Description	Voltage U ₀ /U kV	Dimensions			Cable cross section mm ²	Cable lug	
			L	mm D*	D**		L	D
186312-1ML	RCSIT12EL095.240.ML	6/10	320	36.6	19.0	95-240	95.0	33.0
186312-2ML	RCSIT12EL300.500.ML	6/10	320	46.2	28.0	300-500	130.0	52.0
186312-3ML	RCSIT12EL400.630.ML	6/10	320	50.0	30.78	400-630	130.0	52.0
186412-1ML	RCSOT12EL050.120.ML	6/10	370	32.5	15.6	50-120	79.0	30.0
186412-2ML	RCSOT12EL095.240.ML	6/10	370	36.5	19.0	95-240	95.0	33.0
186412-3ML	RCSOT12EL300.500.ML	6/10	370	46.2	28.0	300-500	130.0	52.0
186412-4ML	RCSOT12EL400.630.ML	6/10	370	50.0	30.78	400-630	130.0	52.0
186324-1ML	RCSIT24EL035.095.ML	12/20	370	33.6	18.5	35-95	60.0	24.0
186324-2ML	RCSIT24EL050.150.ML	12/20	370	36.75	19.6	50-150	79.0	30.0
186324-3ML	RCSIT24EL095.240.ML	12/20	370	42.0	22.8	95-240	95.0	33.0
186324-4ML	RCSIT24EL185.300.ML	12/20	370	44.0	27.4	185-300	105.0	36.0
186324-5ML	RCSIT24EL300.500.ML	12/20	370	50.4	31.9	300-500	130.0	52.0
186424-1ML	RCSOT24EL035.095.ML	12/20	500	33.6	18.5	35-95	60.0	24.0
186424-2ML	RCSOT24EL050.150.ML	12/20	500	36.75	19.6	50-150	79.0	30.0
186424-3ML	RCSOT24EL095.240.ML	12/20	500	42.0	22.8	95-240	95.0	33.0
186424-4ML	RCSOT24EL185.300.ML	12/20	500	44.0	27.4	185-300	105.0	36.0
186425-5ML	RCSOT24EL300.500.ML	12/20	500	50.4	31.9	300-500	130.0	52.0

* max. diameter over outer jacket

** min. diameter over insulation

¹ alternatively also available without cable lug

Cable lug flange hole diameter 13 mm for terminations up to 95-240 mm² and 17 mm for all terminations from 185-300 mm²